

# SONY® Service Bulletin

NO: CTV-98-001

**SUBJECT:** VERTICAL JITTER; R504 AND/OR R521 DAMAGED

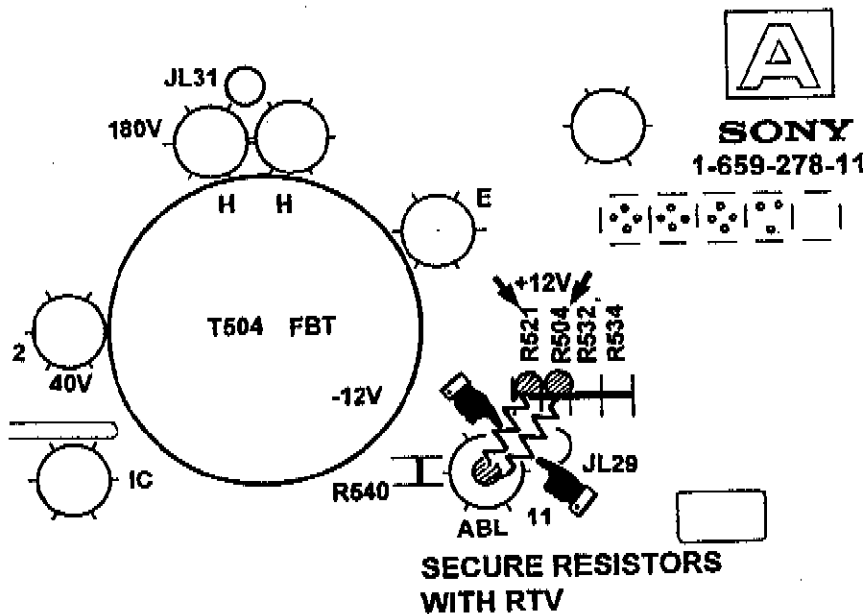
**DATE:** MARCH 1998

**MODEL (S):** KV-9PT50, KV-9PT60

**Symptom:** The picture exhibits vertical jitter. This problem may occur if R504 and/or R521 are damaged.

**Solution:** If the above symptom is found to be caused by damaged R504 and/or R521 on the A-board, replace both resistors with the parts shown below.

REF	FORMER		NEW	
	DESCRIPTION	PART NUMBER	DESCRIPTION	PART NUMBER
R504,R521	RESISTOR, 10K, SURFACE MOUNT, 1/10W	1-216-073-00	RESISTOR, 10K, LEAD TYPE, 1/4W	1-249-429-11



# SONY®

## Service Bulletin

NO: CTV-98-002

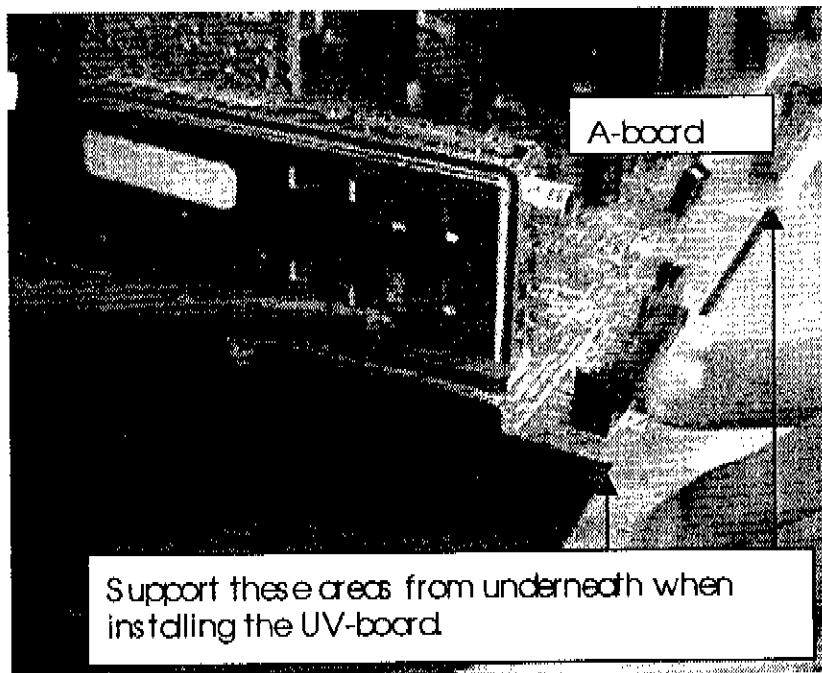
**SUBJECT: PREVENTING DAMAGE TO A-BOARD DURING SERVICING**

**DATE: MARCH 1998**

**MODEL (S): KV-27V36, KV-32V26, KV-32V36, KV-35V36**

**Symptom:** The rear portion of the A-board extends beyond the circuit board support rails of the front cabinet. Consequently, cracked or broken solder joints, lifted lands, or board breakage may occur if pressure is applied to the rear portion of the A-board during servicing. This is especially true when installing the UV-board onto the A-board, which may result in the aforementioned damage in the area of the tuner.

**Solution:** Prevent A-board damage by carefully handling the board during servicing. Be sure to support the A-board from the underside when installing the UV board to prevent any undue stressing of the A-board.



# SONY®

## Service Bulletin

NO: CTV-98-004

**SUBJECT: NEW TUNER REPLACEMENT**

**DATE: MARCH 1998**

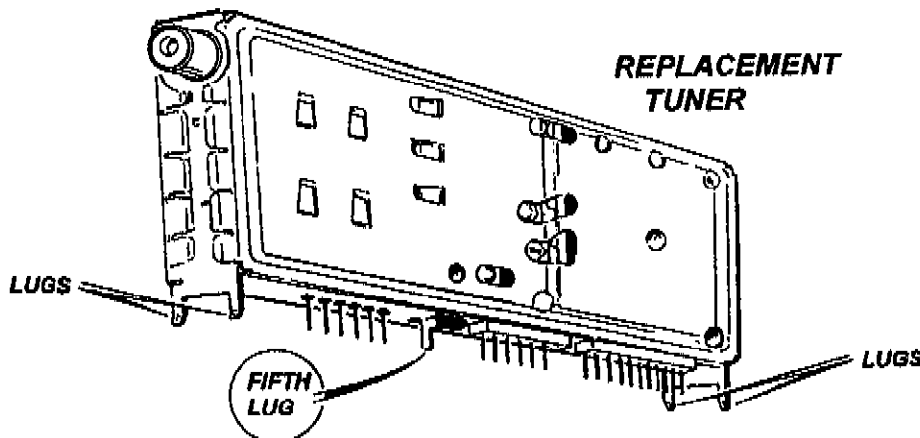
**MODEL (S): SEE LISTED BELOW**

**Model:** KV-13M20, 20M20, 20S20, 20S21, 20S30, 20V60,  
KV-27S20, 27S22, 27S25, 27S26, 27S36, 27V36,  
KV-32S20, 32S22, 32S25, 32S26, 32S36, 32V25, 32V26, 32V35, 32V36,  
KV-35S26, 35V36,  
KV-32XBR48, -35XBR48

**Symptom:** New replacement tuner has five ground lugs compared to four on the original tuner. Board does not have a hole to accommodate the fifth lug.

**Solution:** When replacing the tuner with the new replacement tuner it will become necessary to remove the fifth lug, located in the middle of the tuner.

Description	Former Part Number	New Part Number
Tuner (BTF-WA404)	8-598-340-10	8-598-340-20



# SONY®

## Service Bulletin

NO: CTV-98-005

**SUBJECT:** PART NUMBER MISSING - REFERENCE NO. R543, 0.47 OHM 1/4W

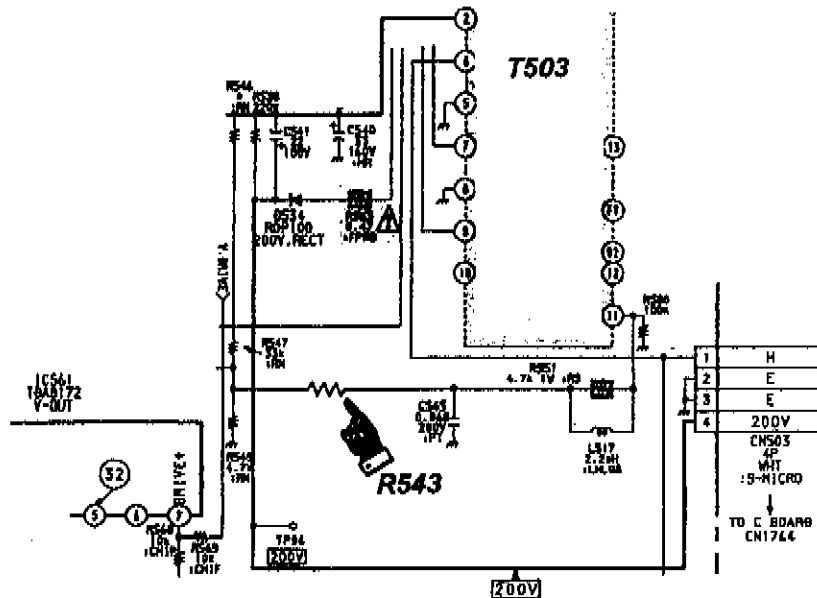
**DATE:** MARCH 1998

**MODEL (S):** KV27S20, KV27S25, KV32S20, KV32S25

**Symptom:** The part number for Ref # R543, 0.47 Ohm 1/4W, located on the A board, was not shown in the schematic or listed in the parts list.

**Solution:** Please add the following part number to the Service Manual.

REF	DESCRIPTION	PART NUMBER
R543	0.47 OHM 1/4W	1-249-377-11



**A BOARD SCHEMATIC GRID LOCATION L-20**

# SONY®

## Service Bulletin

NO: CTV-98-006

**SUBJECT:** SUBSTITUTE FOR VERTICAL OUTPUT IC TDA81 79S

**DATE:** MARCH 1998

**MODEL (S):** LISTED BELOW

**Model:** KV-27XBR25, 27XBR26, 27XBR35, 27XBR36, 27XBR95S, 27XBR96S  
KV-32XBR25, 32XBR26, 32XBR35, 32XBR36, 32XBR90S, 32XBR91S, 32XBR95S, 32XBR96S

**Symptom:** The original Vertical Output IC, TDA8179S, is no Longer Available.

**Solution:** If the Vertical Output IC needs to be replaced, please replace with the new part below.

Ref	Former		New	
	Description	Part number	Description	Part number
IC 1501	TDA8179S	8-759-506-46	STV9379	8-759-192-71

# SONY®

## Service Bulletin

NO: CTV-98-007

**SUBJECT:** PART NUMBER CORRECTION REFERENCE NO.52, BEZNET

**DATE:** MARCH 1998

**MODEL (S):** KV-32S22

**Symptom:** The part number listed on page 52 of the Service Manual for Ref # 52, Beznet, is incorrect.

**Solution:** Please note the correct part number as shown below.

REF	DESCRIPTION	PART NUMBER	
		Incorrect	Correct
52	BEZNET	4-059-287-01	4-058-287-01

# SONY®

## Service Bulletin

NO: CTV-98-008

**SUBJECT: DOUBLE IMAGES**

**DATE: MARCH 1998**

**MODEL (S): KV-27XBR45, 32XBR45**

**Symptom:** The unit may show double images of picture or shadow when customer uses DSS or Laser Disc (very sharp image pictures).

**Solution:** Please try picture adjustment from Step 1 through 3 to minimize double images.

**Step 1. Menu Setup Change**

- (a) Hit "RESET" key on customer remote, return to original setup.
- (b) Open Menu screen and hit Video control
- (c) Open Next Page and turn ON the NR (Noise Reduction)
- (d) Exit from Menu Screen
- (e) Check picture. if not acceptable, go step 2.

**Step 2. Menu Setup Change**

- (a) Open Menu screen and hit Video control
- (b) Open Next Page and turn OFF the VM (Velocity Modulation)
- (c) Exit from Menu screen
- (d) Check picture. If you need more high sharpness, please adjust Sharpness control higher.
- (a) If not acceptable, go step 3.

**Step 3. Service Mode Setup**

- (a) Hit "RESET" key on customer remote, return to original Sharpness level.
- (b) Get into Service Mode using customer remote. (Please refer to Adjustment Manual)
- (c) Open adjustment menu SHPL" and make note original setting.
- (d) Change the service data SHPL from original to " 0 (Zero)".
- (e) Check picture. if not acceptable, continue.
- (f) Change the service data SHPF from original to " 0 (Zero)".
- (g) Check picture. if not acceptable, continue.
- (h) Change the service data SSHP from original to "1"
- (i) Press "MUTE" key and then "ENTER" key on the remote, your setup data will write into Memory
- (j) Check picture. If you need more high sharpness, please adjust Sharpness control higher..

# SONY®

## Service Bulletin

NO: CTV-98-009

**SUBJECT:** NEW CLOSED CAPTION IC

**DATE:** MARCH 1998

**MODEL (S):** SEE LISTED BELOW

**Models:** KV-27S20, KV-27S25, KV-27V20, KV-27V25, KV-27V35, KV-32S20  
KV-32S25, KV-32V25, KV-32V35, KV-35S26, KV-35V36

**Symptom:** No Closed Caption on premium channels.

**Solution:** If the customer experiences the symptom above and the Closed Caption setting are correct, please replace IC001 with the IC below.

Ref	Former	New	Part Number
IC-001	CXP85640-004s	CXP856P4OS-1	T-935-001-61

**Note:** After replacing the IC-001 go into the Service Mode. Select "CRIW" and change the setting from 15 to 3.

This IC contains three additional adjustments. They are used in AA-2D chassis. They have nothing to do with Closed Captioning. These adjustments are:

**LBLK=7**      **Left Side Blanking**  
**RBLK=7**      **Right Side Blanking**  
**HBSWO=0**    **Turns Blanking On.**



# SONY®

## Service Bulletin

NO: CTV-98-010

**SUBJECT:** DRUM PART NUMBER IS INCORRECT

**DATE:** MARCH 1998

**MODEL (S):** KV13VM30, 20VM30

**Symptom:** The pan number for the Drum Assembly, Ref. A-01, in the Service Manual, is incorrect.

**Solution:** Please order the complete Drum Assembly using the part number below.

**Note:** The upper and lower drum can not be ordered separately. The complete drum must be replaced.

REF	FORMER		NEW	
	DESCRIPTION	PART NUMBER	DESCRIPTION	PART NUMBER
A-01	Drum Assy	9-908-441-01	Drum Assy complete	9-939-417-01

# SONY®

## Service Bulletin

NO: CTV-98-003

**SUBJECT:** SCRATCH NOISE IN PICTURE, WHEN IN PIP MODE

**DATE:** MARCH 1998

**MODEL (S):** KV-32XBR48, 35XBR48

**Symptom:** If two different signal sources are displayed when in the PIP mode is selected, a scratch noise (lines in picture) may appear in the picture.

**Solution:** The following changes will need to be made to correct this symptom.

- 1.The PX board must be replaced with *PIN 1-666-471-XX*.
- 2.Replace the Microprocessor (-001S)CXP85856A-001S (labeled for PIP scratch Noise)
- 3.Modify the A board (suffix -11): connect the lands of C058 and R005 using a jumper wire (80mm)

The PX board and Microprocessor is available as a Kit.

PART NO.	DESCRIPTION
T-9350077-1	Scratch Kit

